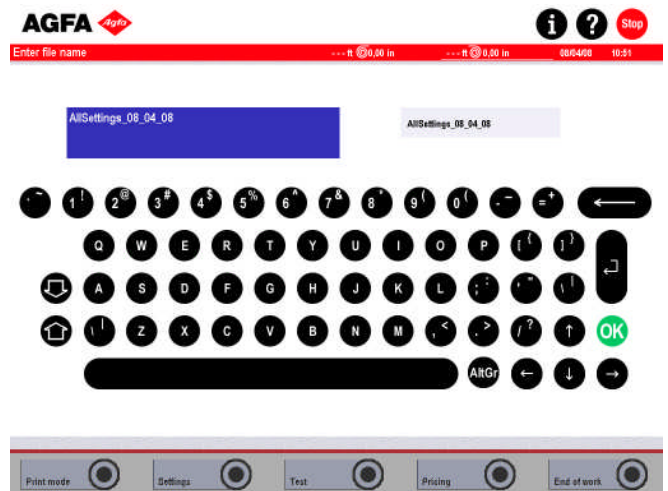
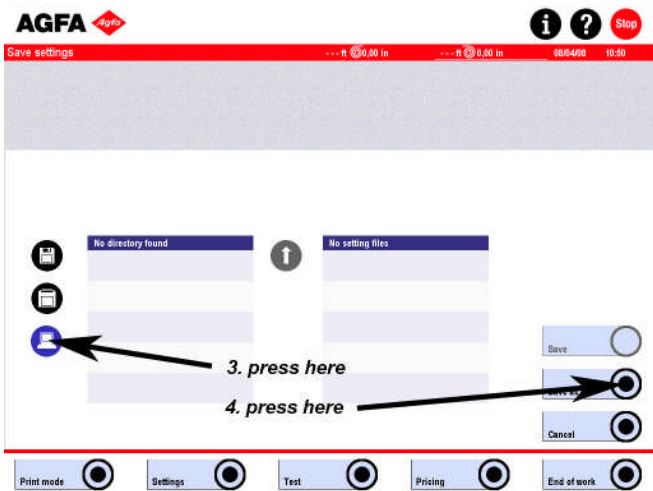
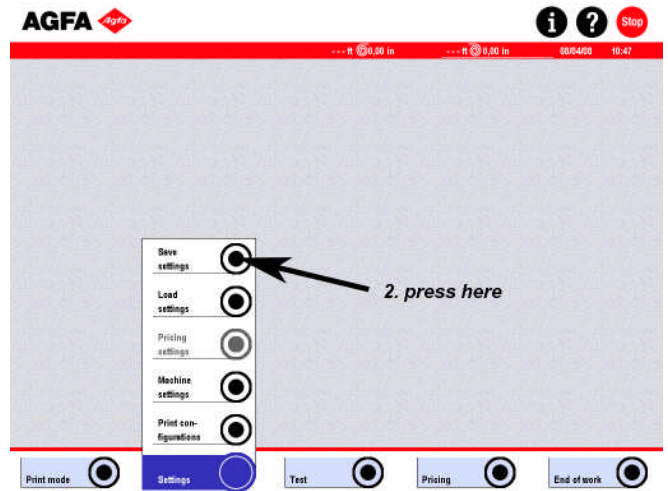
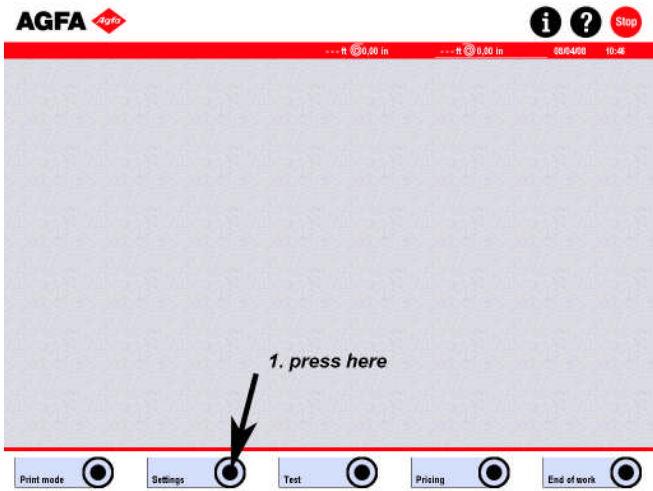
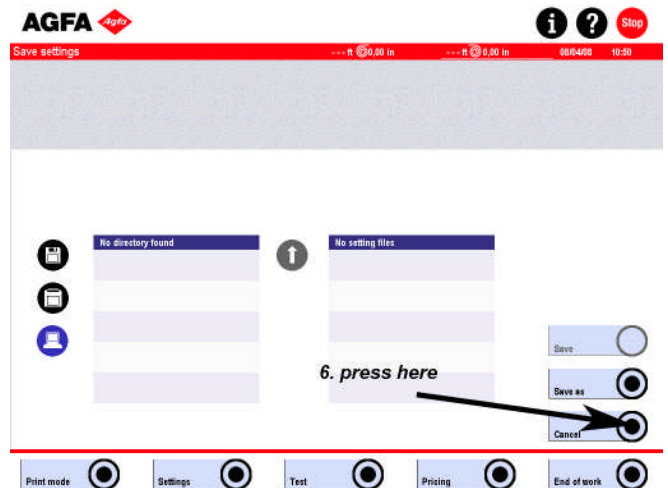
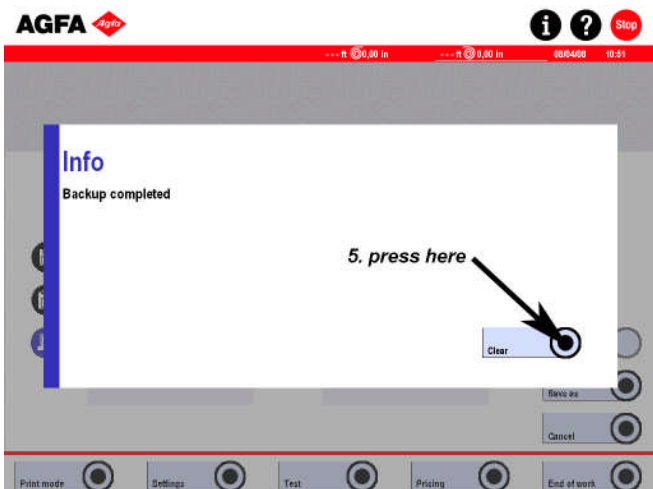


# Save settings d-lab 2 / 3 & net-lab



After entering your "file name" click on **OK** (okay)



# Save settings d-lab 2 / 3 & net-lab



**Please Note** : by following the above steps you will **only** back up the settings too the hard disk. A real back up should be kept outside the machine, we recommend to use a Zip disk ( 100 to 750 MB ) depending on your Zip disk drive.

If you can not find a Zip disk, you can use your network to back up the data, or a USB jump drive.

Please follow the above 6 steps. This will back up the all the channel information and machine settings to the hard disk.

## **Back up to a Zip disk:**

Follow the flow chart, in the third window select the Zip disk icon (above the computer icon, marked set 3.) This will now save the channel data too the Zip disk as well as the machine data files. Continue to follow all the other steps.

**Backing up:** custom Layout files like Index and Combiprints. "" Only if you use them ""

This has to be done manually, if you feel you are not up for the task please call us @ 888 – 577 – 0428 we will guide through it. **This will not be free, a service charge may apply.**

1. Click on the info (I) on the top of the screen. You will see now the service button on the top right.
2. click on it, you will be prompted " do you want to enter the service function" click on yes
3. You should see now Charlie Chaplin on the top right and on the left you will see yellow file folders!!!!
4. Look for the yellow U-turn sign on the top left screen, click on it. The watch dog task control window will open up now.
5. Click on a button called " Control ", the window will expand. Now you will see in the lower right a button called execute (next to it will be " explorer.exe ")
6. Click on the "execute" button. You will see now in the back ground the windows explorer window. However the expanded watch dog control task window will be still in the foreground.
7. Click now on the "hide" button.... NOT any other..... this will close the watch dog task control window.
8. You should see now the windows explorer window. You will have to maximize the window.
9. Insert your ZIP disk or USB jump drive (has to be inserted at the back of the PC) make sure you know your drive letter, for either the Zip or Jump drive. If you are working via a NETWORK you should be able to access it via the net work neighborhood function.
10. Select the " D " drive (DATA). You will find here the DATA directory, within the directory you will find the following two directories " INDEX " and "COMBIPRINT" , on some older software they are combined.
11. Copy (not move) the "index" and "Combiprints "folders to your zip drive or USB or network drive.
12. There is one more directory called " DBbackup" depending on your zip or USB drive the whole directory might be too large to be copied. Reason this is where the machine stores its backup files. So when you back up the machine using the computer icon and not the zip disk icon (see above step 3 first page) they will be placed here. Just select the last two or three backups..... Please note there are always four files per backup. Sort them by date and you will see.
13. Please check if you have transferred all the files too the zip drive or USB or Network drive before you close the service window via the exit ( x top right corner ).
14. Remove the zip disk or USB jump drive and keep them in a save place.